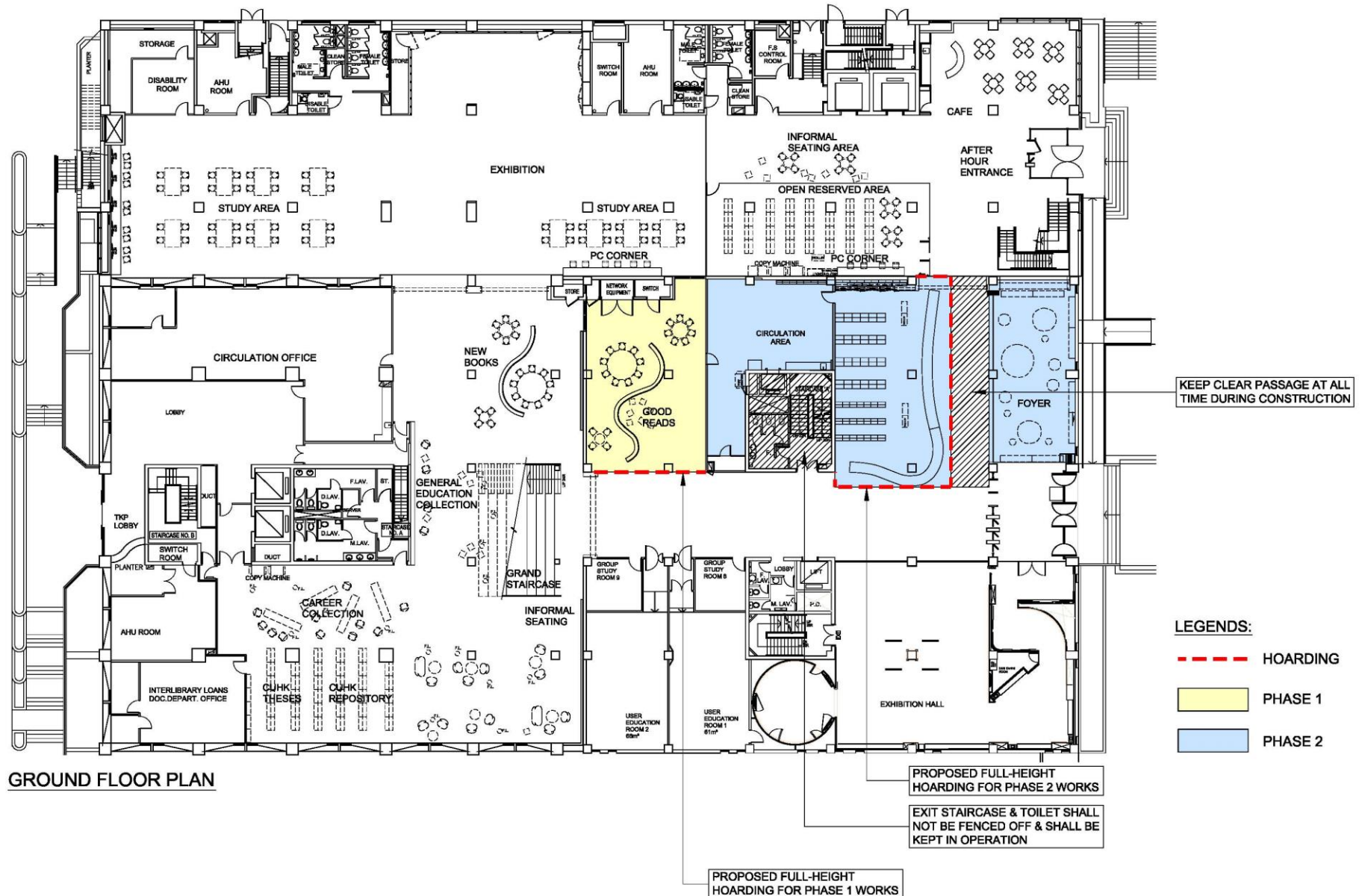




Remodeling of University Library

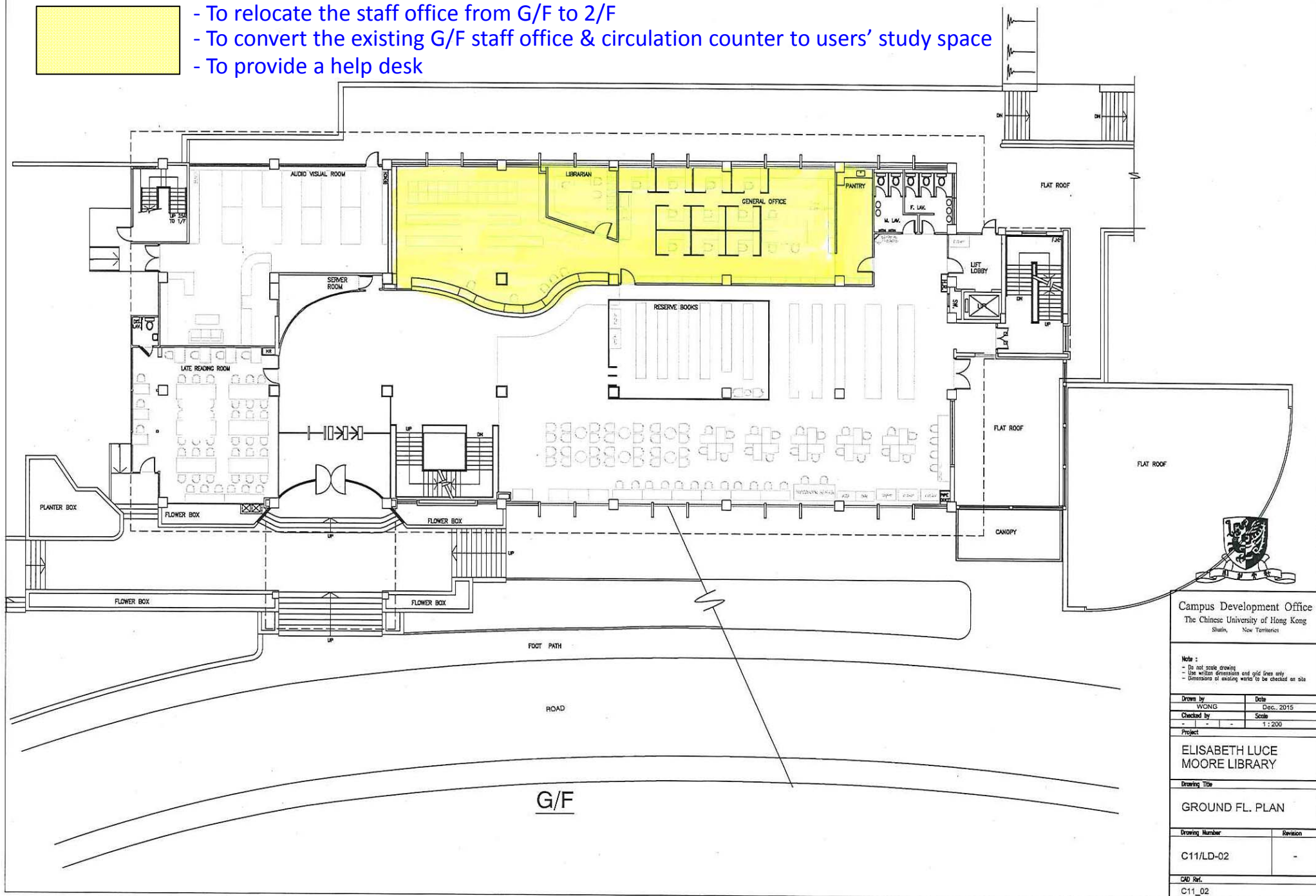
Remodeling of University Library - Hoarding Plan



Remodeling of
Elisabeth Luce Moore Library of Chung Chi College



- To relocate the staff office from G/F to 2/F
- To convert the existing G/F staff office & circulation counter to users' study space
- To provide a help desk



Campus Development Office
The Chinese University of Hong Kong
Shatin, New Territories

Note :
- Do not scale drawing
- Use written dimensions and grid lines only
- Dimensions of existing works to be checked on site

Drawn by	Date
WONG	Dec, 2015
Checked by	Scale
	1:200

Project
**ELISABETH LUCE
MOORE LIBRARY**

Drawing Title
GROUND FL. PLAN

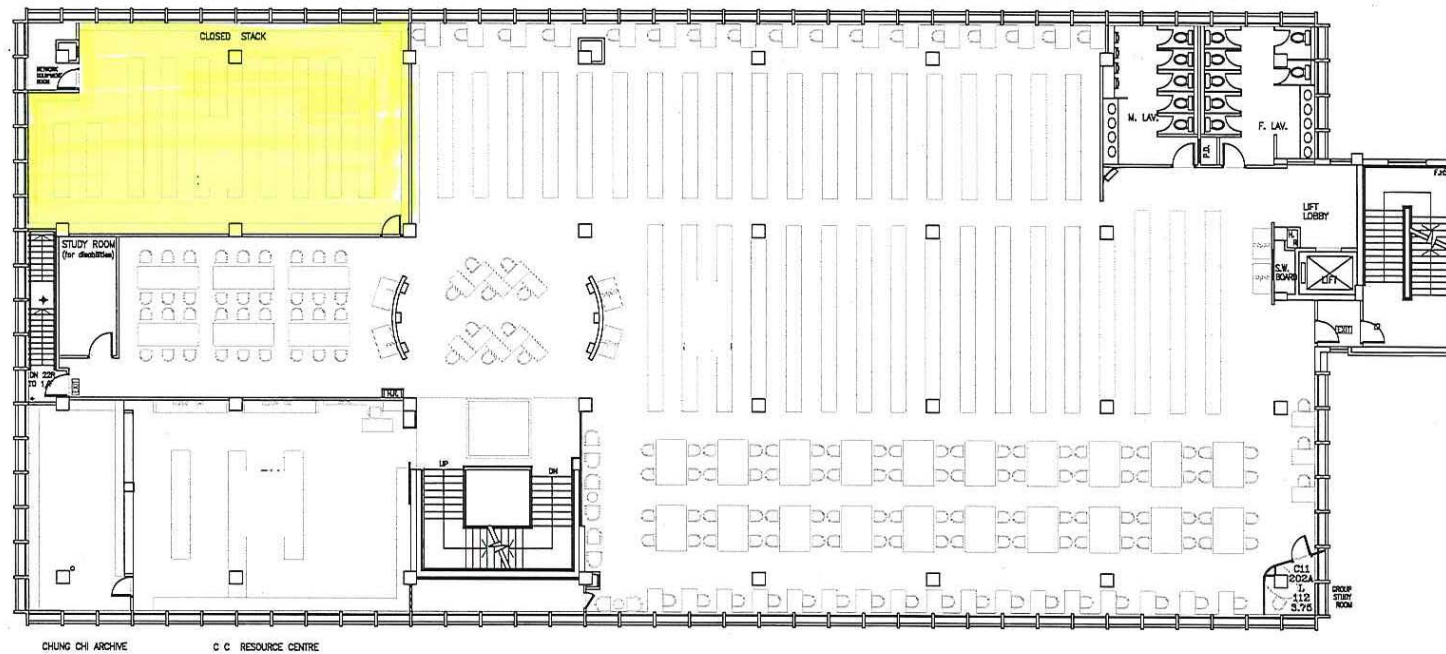
Drawing Number	Revision
C11/LD-02	-

CAD Ref.
C11_02

Remodeling of Elisabeth Luce Moore Library at G/F, Chung Chi College



- To convert the existing close stack to staff office



2/F



Campus Development Office
The Chinese University of Hong Kong
Shatin, New Territories

Note :
- Do not scale drawing
- Use written dimensions and grid lines only
- Dimensions of existing works to be checked on site

Drawn by	Date
WONG	DEC., 2015
Checked by	Scale
-	1:200

Project

ELISABETH LUCE
MOORE LIBRARY

Drawing Title

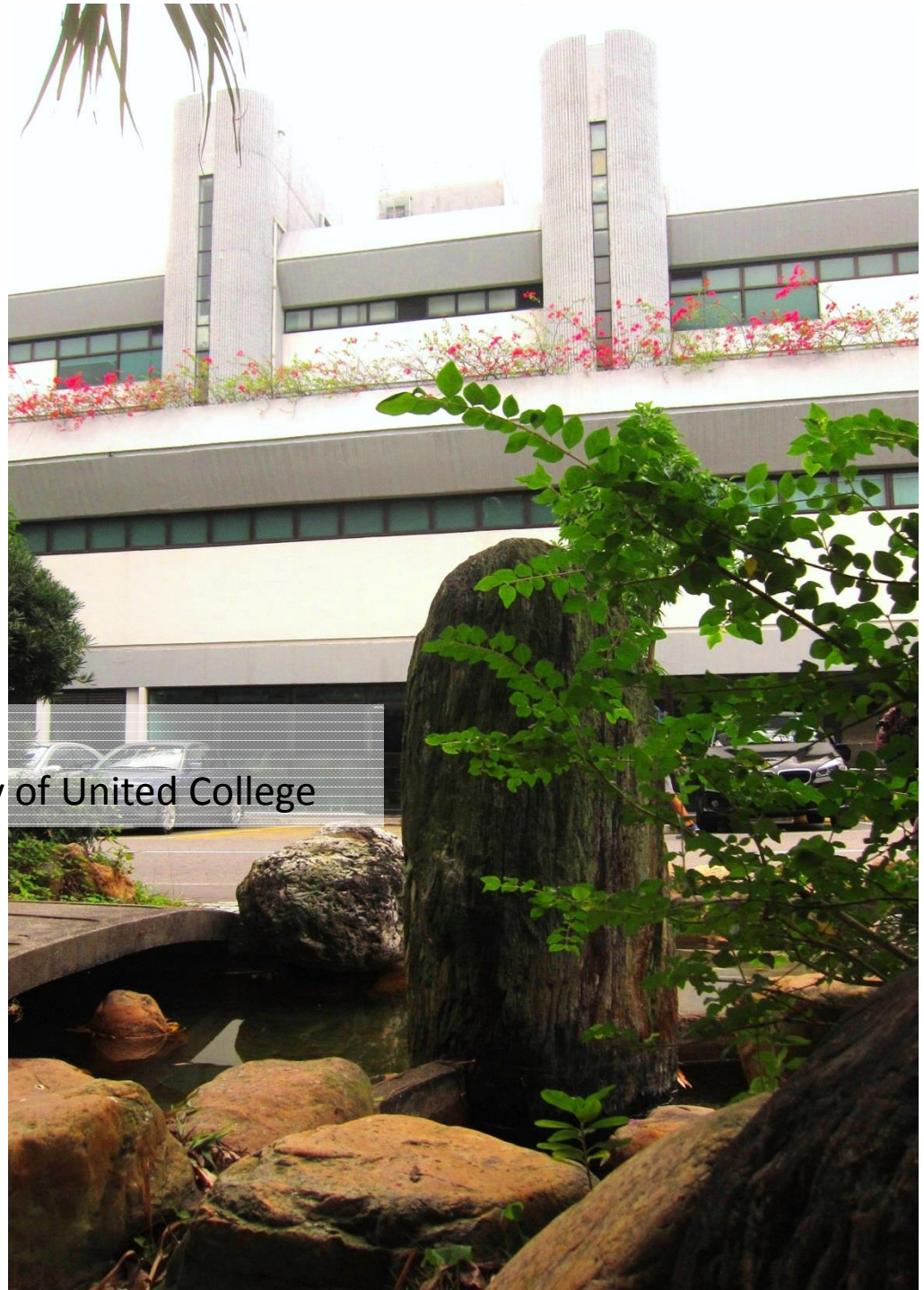
SECOND FLOOR PLAN

Drawing Number	Revision
C11/LD-04	-

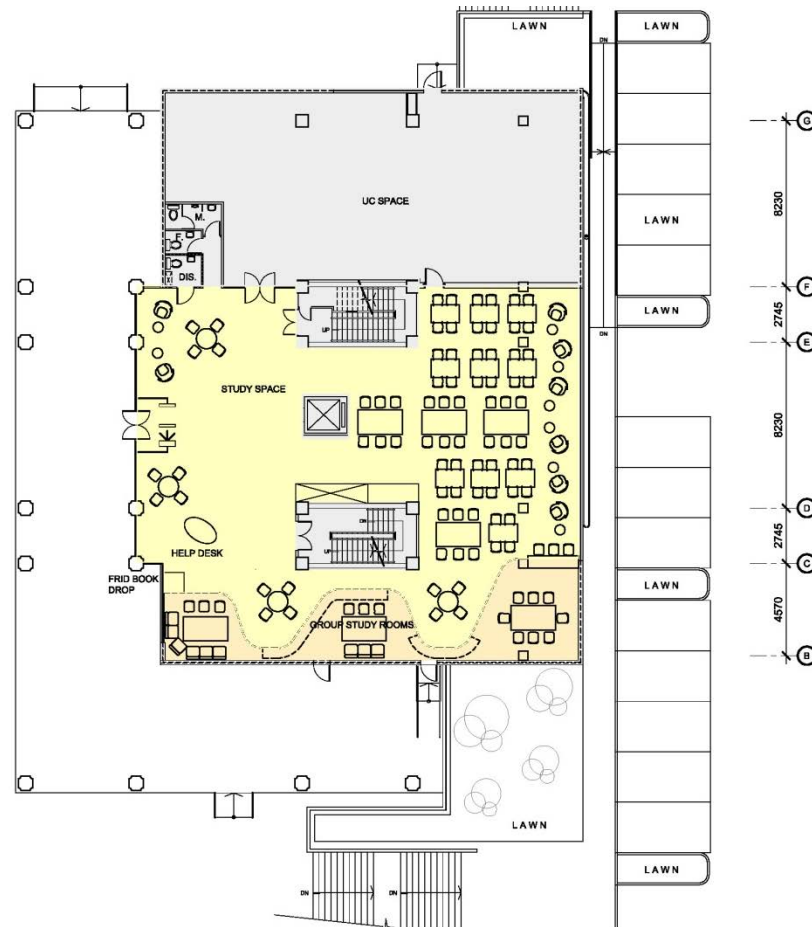
CAD Ref.
C4_02

Remodeling of Elisabeth Luce Moore Library at 2/F, Chung Chi College

Remodeling of
Wu Chung Multimedia Library of United College



-



Remodeling of Wu Chung Multimedia Library at G/F, United College

[illegible]